

KM-515M_H-P

SLIM-LINE MODULAR CRESCENT CUBER

TAMPER PROOF MODEL

Item # _____

Project: _____

Qty: _____
*AutoCad available on KCL

KM-515M_H-P
5/14
Item #13318

CUBER DIMENSIONS

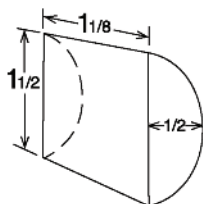
W x D x H

KM-515M_H-P
22 x 27^{3/8} x 30^{5/16}



Exterior Fasteners are
Tamper Proof Torx Pin Screws

KM CUBE DIMENSIONS



**approximate size in inches, image not to scale

KM-515MAH-P




Air-Cooled

KM-515MWH-P

Water-Cooled



Shown on standard bin for placement only.

- Up to 527 lbs. of ice production per 24 hours
- Durable stainless steel exterior
- Individual crescent cube
- Protected by H-GUARD Plus Antimicrobial Agent 
- CycleSaver® Design 
- EverCheck® alert system 
- Stainless steel evaporator
- Mount two units side-by-side, in only 44" of floor space, for 1054 lbs. per 24 hours
- Removable air filters located under front panel (Air-cooled models only)
- R-404A Refrigerant

* The KM-515MAH-P is ENERGY STAR qualified.

Warranty

Valid in United States, Canada, Puerto Rico, & U.S. Territories. Contact factory for warranty in other countries.

Three Year - Parts & Labor on entire machine.

Five Year - Parts & Labor on: Evaporator.

Five Year - Parts on: Compressor, air-cooled condenser coil.



ISO 9001:2015

© HOSHIZAKI AMERICA, INC.

618 Hwy. 74 S., Peachtree City, GA 30269

TEL 1-800-438-6087

FAX 1-800-345-1325

www.hoshizaki.com



KM-515M_H-P SLIM-LINE MODULAR CRESCENT CUBER

DIMENSIONS
W x D x H
KM-515M_H-P
22 x 27^{3/8} x 30^{5/16}

- Air-cooled
- Water-cooled

AIR-COOLED

Water Temp ° F.	50°	70°	90°
Air Temp ° F.			
70°	527	504	474
80°	510	475	444
90°	504	450	419

WATER-COOLED

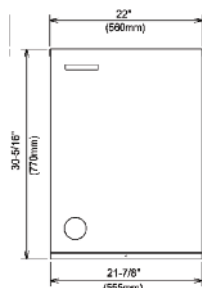
Water Temp ° F.	50°	70°	90°
Air Temp ° F.			
70°	462	457	427
80°	458	451	407
90°	457	446	407

UTILITY CONSUMPTION

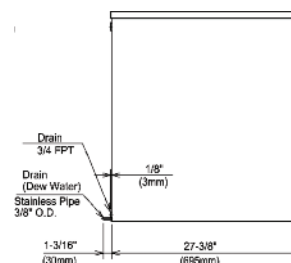
Model Number	Ice Production Per Cycle Lbs. Cubes	KWH per 100 LBS. 90/70	Potable Water Gal. per 100 lbs.	Condenser Water Gal. per 100 lbs.
KM-515MAH-P	9.8 480	5.9	18.5	N/A
KM-515MWH-P	10.0 480	5.14	23.0	106

SPECIFICATIONS

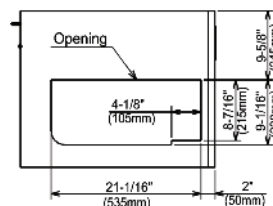
Model Number	Condenser	Amperage	Min. Circuit Ampacity	Shipping Weight
KM-515MAH-P	Air-Cooled	11.7	20	175 lbs.
KM-515MWH-P	Water-Cooled	9.6	20	175 lbs.



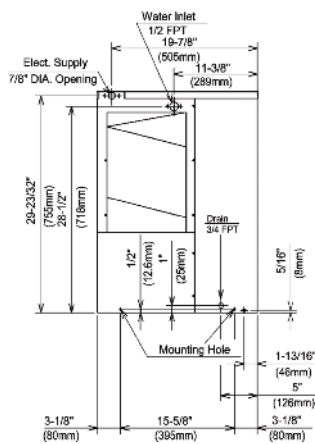
FRONT VIEW



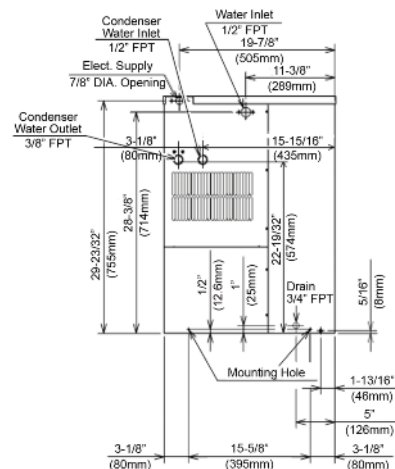
SIDE VIEW



ICE DROP ZONE



AIR-COOLED UNIT



WATER-COOLED UNIT

ELECTRICAL & PLUMBING/KM-515M_H-P

- 115V/60/1
- 20 Amp Max Fuse/HACR Breaker Size
- 3/8" OD copper or equivalent independent potable water supply with 1/4" nominal ID minimum
- 3/4" FPT water drain



© HOSHIZAKI AMERICA, INC.

618 Hwy. 74 S., Peachtree City, GA 30269

OPERATING LIMITS

- Ambient Temp Range 45 - 100°F
- Water Temp Range 45 - 90°F
- Water Pressure 10 - 113psig
- Voltage Range 104 - 127V

SERVICE

- Panels easily removed and all components accessible for service.
- Removable/cleanable air filters under front panel (Air-cooled model only)
- Exterior fasteners are tamper proof torx pin screws.



TEL 1-800-438-6087

FAX 1-800-345-1325

www.hoshizaki.com

Printed in U.S.A.