



KM-340M_H

SLIM-LINE MODULAR CRESCENT CUBER



KM-340M_H
09/21/15
Item # 13344

W x D x H
22" x 27^{3/8}" x 30^{5/16}"

KM-340MAH ★
Air-Cooled 1 Phase
Shown on optional Bin: B-300

KM-340MWH
Water-Cooled 1 Phase



Item #: _____
Project: _____
Qty: _____
AIA#: _____

Features

- ▶ Individual crescent cube
- ▶ Stainless steel evaporator
- ▶ CycleSaver™ design

- Up to 387 lbs. of ice production per 24 hours
- Durable stainless steel exterior
- Protected by H-Guard Plus Antimicrobial Agent
- EverCheck™ alert system
- Removable air filters (Air-cooled model only)
- R-404A Refrigerant

Available on Bins:

B-250 B-800 B-1500SS
B-300 B-900 B-1650SS
B-500 B-1150SS
B-700 B-1300SS

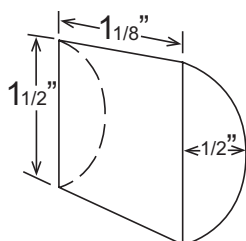
Available on Dispensers:

DB-130H
DB-200H
DM-200B

ICE PRODUCTION

	Condenser	Model	Air / Water Temp Lbs. per 24 hours		Per Cycle		KWH per 100 lbs.	Potable Water Gal. per 100 lbs.	Condenser Water Gal. per 100 lbs.	Min. Circuit Ampacity	Voltage	Heat Rejection BTU/hr.	Shipping Weight	ENERGY STAR®
			70°/ 50°F	90°/ 70°F	Lbs.	Cubes								
1 Phase	Air-Cooled	KM-340MAH	387	325	11.3	480	5.9	20.0	N/A	20	115V/60/1	6,700	153 lbs.	★
	Water-Cooled	KM-340MWH	386	360	11.3	480	4.9	20.5	115	20	115V/60/1	7,500	175 lbs.	

KM Cube Dimensions*



* approximate size in inches, image not to scale

Operating Limits

- Ambient Temp Range 45 - 100°F
- Water Temp Range 45 - 90°F
- Water Pressure 10 - 113 PSIG
- Voltage Range 104 - 127V

Service

- Panels easily removed and all components accessible for service.
- Removable/cleanable air filters. (Air-Cooled model only)
- Allow 6" (15cm) clearance at rear, sides, and top for proper air circulation and ease of maintenance/service.

Plumbing

- Ice maker Water Supply Line: Minimum 1/4" Nominal ID Copper Water Tubing or Equivalent
- Ice maker Drain Line: Minimum 3/4" Nominal ID Hard Pipe or Equivalent
- Water-Cooled Model (Lines Must Be Independent of Ice maker)
- Condenser Water Supply Line: Minimum 1/4" Nominal ID Copper Water Tubing or Equivalent
- Condenser Drain/Return Line: Minimum 1/4" Nominal ID Hard Pipe (open drain system) or Copper Water Tubing (closed loop system) or Equivalent

Hoshizaki reserves the right to change specifications without notice.



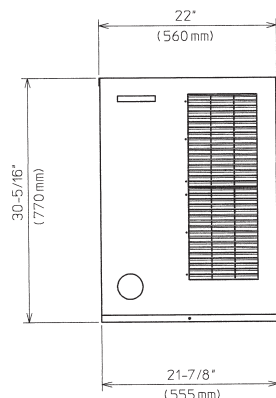
KM-340M_H

SLIM-LINE MODULAR CRESCENT CUBER

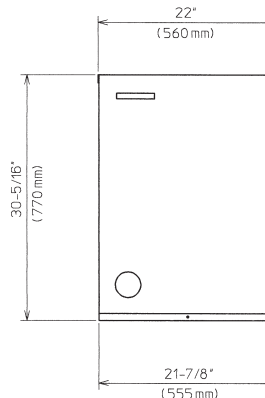


KM-340M_H
09/21/15
Item # 13344

FRONT VIEW

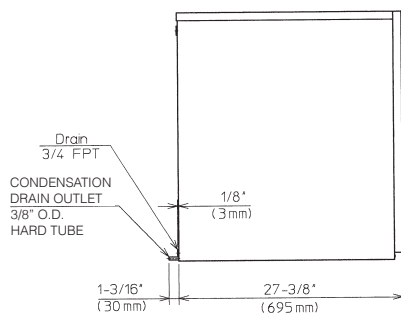


AIR-COOLED

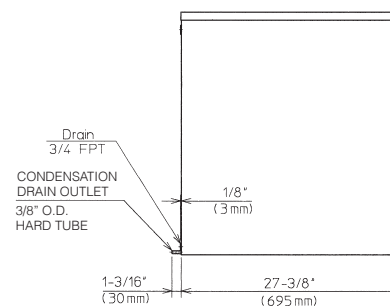


WATER-COOLED

SIDE VIEW

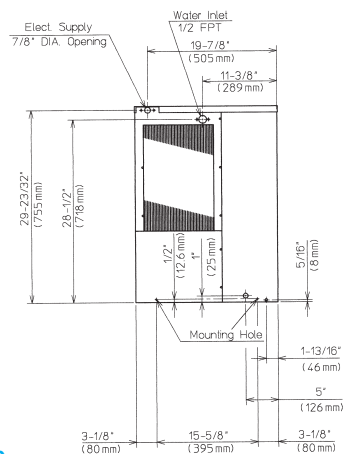


AIR-COOLED

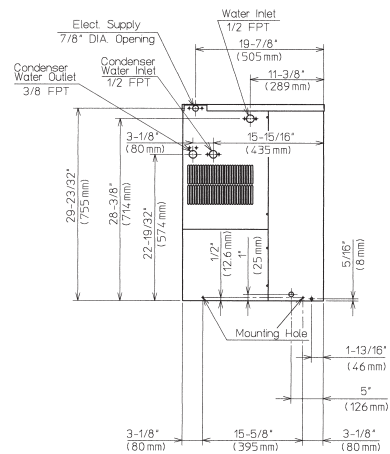


WATER-COOLED

BACK VIEW

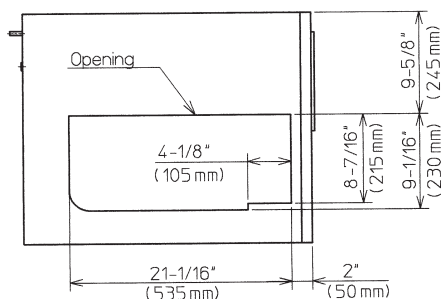


AIR-COOLED

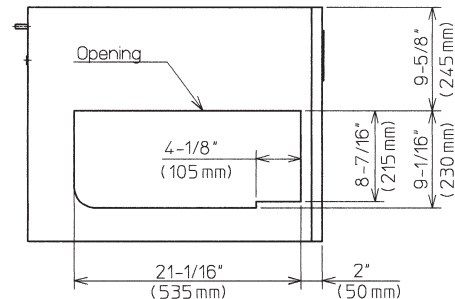


WATER-COOLED

BOTTOM VIEW



AIR-COOLED



WATER-COOLED