

Item # _____

Project: _____

Qty: _____

*AutoCad available on KCL

KM-151B_H

SELF-CONTAINED CUBER WITH BUILT-IN STORAGE BIN

KM-151B_H

3/30/15

Item # 13236

CUBER DIMENSIONS W x D x H

KM-151B_H
 $23\frac{3}{4} \times 28\frac{1}{4} \times 39^*$
 * with 6" legs





KM-151BAH

Air-Cooled
Shown

KM-151BWH

Water-Cooled

- Up to 146 lbs. of ice production per 24 hours
- Up to 78 lbs. of built-in storage capacity
- Individual crescent cube
- Durable stainless steel exterior
- CycleSaver™ Design 
- EverCheck™ alert system 
- Front in, front out airflow (Air-cooled model only)
- Stainless steel evaporator
- Slide in door
- Removable air filter (Air-cooled model only)
- Power switch accessible without panel removal
- Built-in installation possible
- R-134a Refrigerant

* The KM-151BAH is ENERGY STAR qualified.



ISO 9001:2015

Warranty

Valid in United States, Canada, Puerto Rico, & U.S. Territories. Contact factory for warranty in other countries.

Three Year - Parts & Labor on entire machine.

Five Year - Parts & Labor on: Evaporator.

Five Year - Parts on: Compressor, air-cooled condenser coil.



Hoshizaki

SELF-CONTAINED CUBER WITH BUILT-IN STORAGE BIN

DIMENSIONS
W x D x H
KM-151B_H
23^{3/4} x 28^{1/4} x 39*
*with 6" legs

- Air-cooled
- Water-cooled

AIR-COOLED

Water Temp ° F.	50°	70°	90°
Air Temp ° F.			
70°	146	139	129
80°	140	129	119
90°	139	121	111

WATER-COOLED

Water Temp ° F.	50°	70°	90°
Air Temp ° F.			
70°	146	141	136
80°	142	135	131
90°	141	130	125

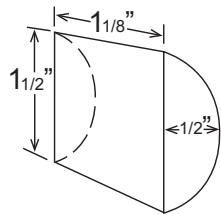
UTILITY CONSUMPTION

Model Number	Ice Production Per Cycle		KWH per 100 LBS.	Potable Water Gal. per 100 lbs.	Condenser Water Gal. per 100 lbs.
	Lbs.	Cubes			
KM-151BAH	2.75	130	8.4	17.8	N/A
KM-151BWH	2.75	130	7.3	25.0	140

SPECIFICATIONS

Model Number	Condenser	Amperage	Min. Circuit Ampacity	Shipping Weight
KM-151BAH	Air-Cooled	7.0	15A	156 lbs.
KM-151BWH	Water-Cooled	6.8	15A	156 lbs.

*KM CUBE DIMENSIONS



*approximate size in inches, image not to scale

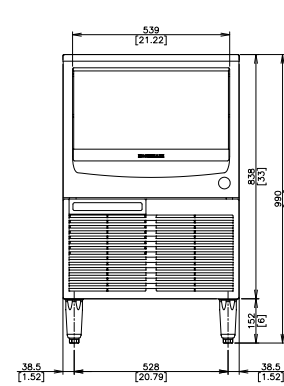
ELECTRICAL & PLUMBING/KM-151B_H

- 115V/60/1
- 15 amp Max Fuse/HACR Breaker Size
- Ice maker Water Supply Line: Minimum 1/4" Nominal ID Copper Water Tubing or Equivalent
- Ice maker Drain Line: Minimum 3/4" Nominal ID Hard Pipe or Equivalent
- Water-Cooled Model (Lines Must be Independent of Ice maker)
- Condenser Water Supply Line: Minimum 1/4" Nominal ID Copper Water Tubing or Equivalent
- Condenser Drain/Return Line: Minimum 1/4" Nominal ID Hard Pipe (open drain system) or Copper Water Tubing (closed loop system) or Equivalent

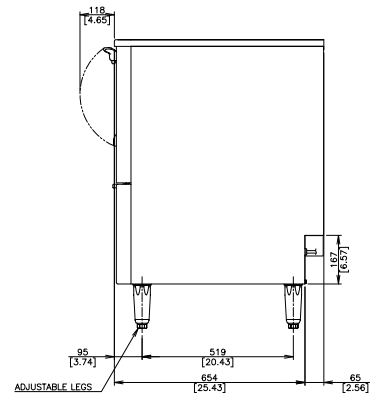


© HOSHIZAKI AMERICA, INC.

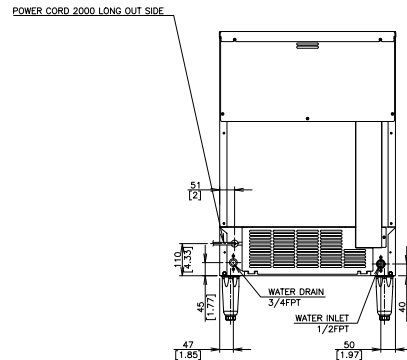
618 Hwy. 74 S., Peachtree City, GA 30269



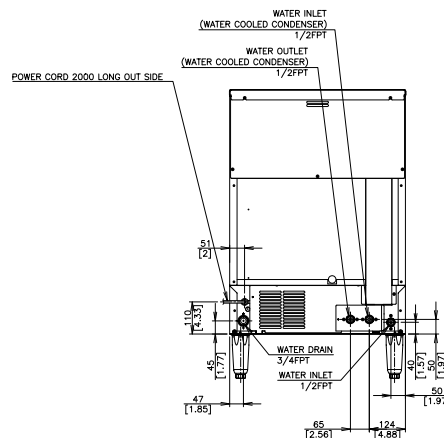
AIR-COOLED / WATER-COOLED
FRONT VIEW



AIR-COOLED / WATER-COOLED
SIDE VIEW



AIR-COOLED
BACK VIEW



WATER-COOLED
BACK VIEW

OPERATING LIMITS

- Ambient Temp Range 45 - 100°F
- Water Temp Range 45 - 90°F
- Water Pressure 10 - 113psig
- Voltage Range 104 - 127V

